

531000 531500 532000 532500 533000 533500

182500

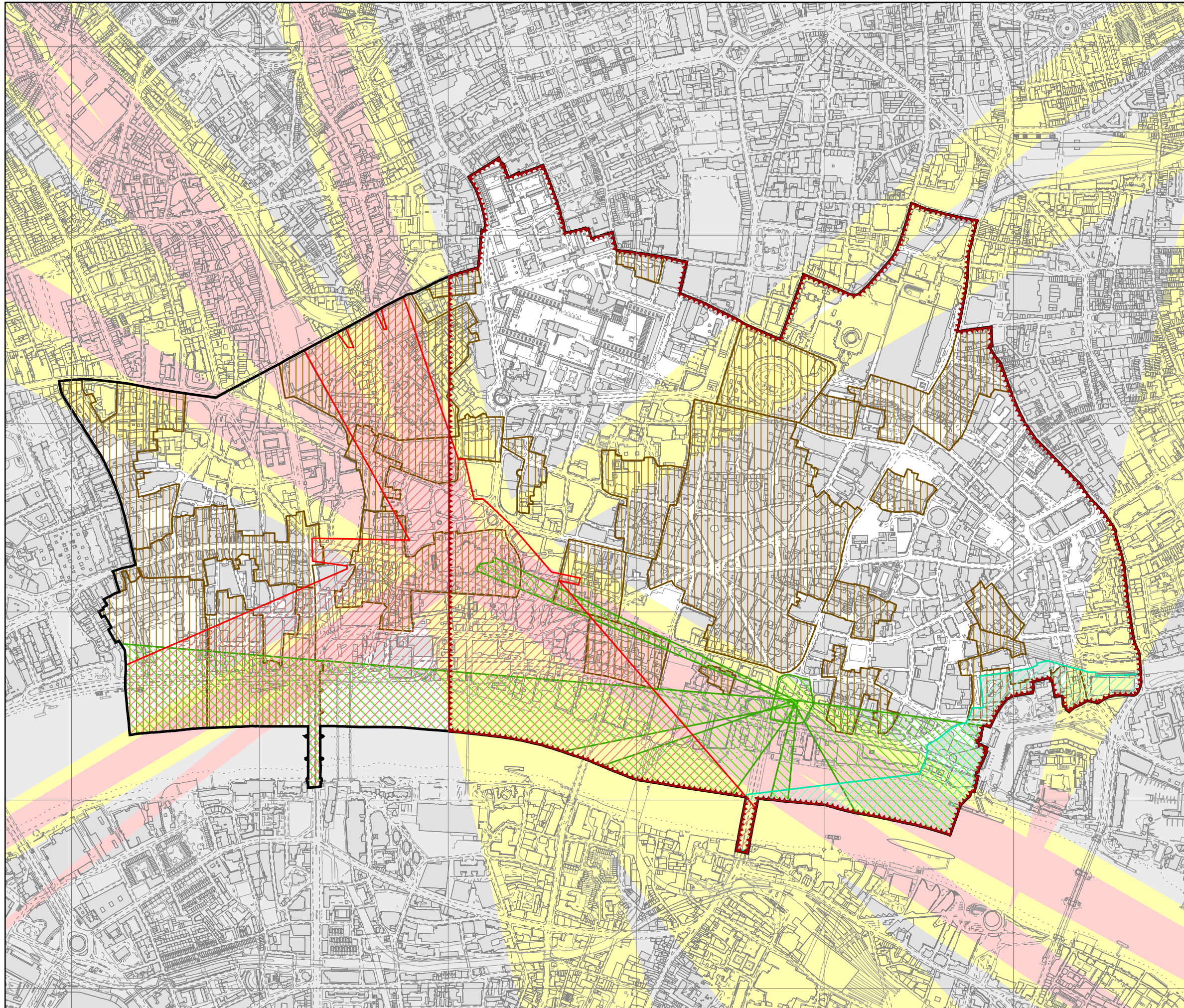
182000

181500

181000

180500

180000



531000 531500 532000 532500 533000 533500

**CITY OF LONDON**  
**LOCAL PLAN**  
**POLICIES MAP A**  
 January 2015

**KEY**

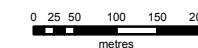
Administrative Boundary of the City of London

City Culture & Heritage	Policy No.
Conservation Areas	CS 12 & 14 DM 12.1 & 12.2
London View Management Framework - Protected Vista Landmark Viewing Corridors	CS 13 & 14
London View Management Framework - Protected Vista Wider Setting Consultation Areas	CS 13 & 14
St Paul's Heights Policy Area	CS 13 & 14
Monument Views and Setting	CS 13 & 14
Airport Safeguarding Area	CS 14
Tower of London World Heritage Site - Local Setting Area	CS 12

This Policies Map is one of two covering the City of London. See also Policies Map B.



SCALE 1:10000



DEPARTMENT OF THE BUILT ENVIRONMENT  
 Philip Everett  
 BSc, CEng, MICE  
 Director of the Built Environment